

MANUAL  
FOR  
**AUTOCLAVE PORTABLE  
PAD**  
**(Preset Automatic Digital)**

#7407PAD



Sr No. Of Autoclave :

V. 1.0

**000 «Диаэм»**

Москва  
ул. Магаданская, д. 7, к. 3 ■ тел./факс: (495) 745-0508 ■ [sales@dia-m.ru](mailto:sales@dia-m.ru)

[www.dia-m.ru](http://www.dia-m.ru)

**С.-Петербург**  
+7 (812) 372-6040  
[spb@dia-m.ru](mailto:spb@dia-m.ru)

**Новосибирск**  
+7 (383) 328-0048  
[nsk@dia-m.ru](mailto:nsk@dia-m.ru)

**Воронеж**  
+7 (473) 232-4412  
[vrn@dia-m.ru](mailto:vrn@dia-m.ru)

**Йошкар-Ола**  
+7 (927) 880-3676  
[nba@dia-m.ru](mailto:nba@dia-m.ru)

**Красноярск**  
+7 (923) 303-0152  
[krsk@dia-m.ru](mailto:krsk@dia-m.ru)

**Казань**  
+7 (843) 210-2080  
[kazan@dia-m.ru](mailto:kazan@dia-m.ru)

**Ростов-на-Дону**  
+7 (863) 303-5500  
[rnd@dia-m.ru](mailto:rnd@dia-m.ru)

**Екатеринбург**  
+7 (912) 658-7606  
[ekb@dia-m.ru](mailto:ekb@dia-m.ru)

**Кемерово**  
+7 (923) 158-6753  
[kemerovo@dia-m.ru](mailto:kemerovo@dia-m.ru)

**Армения**  
+7 (094) 01-0173  
[armenia@dia-m.ru](mailto:armenia@dia-m.ru)





## PACKING LIST

Autoclave Portable (C) PAD
#7407PAD
Sr No of the Product:

1	The Autoclave - Portable PAD	[ ]
2	Test Report	[ ]
3	Calibration certificates with traceability	[ ]
4	Manual - 1070-02	[ ]
5	Dressing Drum SS304 - Ø27 x 22cm (11x9")	[ ]
6	X Stand SS304	[ ]
7	Spare Gasket	[ ]
	Packed By	




**Dear Customer,**

- a. Thank you for the confidence in equitron® Portable PAD Autoclave and we hope that it meets your expectations.
- b. Please read this manual thoroughly before starting the equipment and in order to operate it in an efficient manner.
- c. Please use the equipment in accordance to this Manual for keeping it in a good condition.
- d. Please contact the Dealer if the machine encounters a problem. We ensure quality service and customer support.
- e. We operate on a policy of continuous development. Therefore we reserve the right to make changes and improvements to any of the products described in this manual without prior notice.

**INDEX**

<b>Sr.</b>	<b>Topic</b>	<b>Page no.</b>
1.0	Introduction	7
1.1	Basic information	7
1.2	Intended use	7
2.0	Unpacking	8
2.1	Material shipped	8
2.2	General safety precautions	8
3.0	Installation	9
3.1	Environmental conditions	9
3.2	Utilities required	9
3.3	Placement	9
4.0	Operation	10
4.1	Procedure	10
4.2	Front panel of controller	11
4.3	Controller setting	12
5.0	Cleaning	13
6.0	General specifications	13
6.1	Technical specification	13
6.2	Controller wiring diagram	14
	Warranty	15

**MEANING OF SYMBOLS:**

	This symbol draws attention to the user manual, for example, <u><i>Check water level in the chamber and add water before each sterilization cycle.</i></u>
	This symbol warns about hot surfaces and should not be touched during operation
	This symbol indicates location of grounding protection on product.

## 1.0 INTRODUCTION:

### 1.1 Basic information:

equitron® Portable PAD is used for Sterilization purpose. Sterilization may be defined as the statistically complete destruction of all micro organisms including the most resistant bacteria and spores.

Portable Preset Autoclave Digital (PAD) uses saturated steam for effective sterilization, for this purpose it uses a heater assembly fitted at the bottom.

### 1.2 Intended use:

equitron® Preset Autoclave Digital can be used for numerous medical and laboratory applications in market sectors such as food and dairy, universities and colleges, agriculture and healthcare (including Pharmaceuticals, chemical industries) etc. These *Autoclaves* are intended to sterilize unwrapped solid instruments and non-porous loads.

- a. Media preparation.
- b. Sterilization of media as well as surgical instruments.
- c. For preparing materials for discarding and Dentistry.



## **2.0 UNPACKING:**

While unpacking the consignment, please insure that following materials are intact, else contact to dealer / manufacturer.

### **2.1 Material shipped:**

- a. The Autoclave.
- b. One Stainless Steel Dressing Drum.
- c. One Stainless Steel Heater cover X Stand.
- d. This manual
- e. Calibration certificate, test reports
- f. Warranty card

### **2.2 General safety precautions:**

- a. Observe all standard laboratory safety and accident prevention rules and regulations.
- b. The *Autoclaves* are made for **Sterilization Purpose** and should not be used for any other purpose.
- c. Before connecting the equipment to a power socket, please ensure that line supply matches that of the instrument rating.
- d. Never touch the steam outlet and the *Autoclave's* outer body when it is in operation. It may cause burns. Equitron medica private limited should not be hold responsible for such inadequate actions.
- e. Don't allow untrained person, to use the *Autoclave*.
- f. Before using the *Autoclave* make sure that the internal chamber is clean and free from residue.
- g. For effective sterilization, steam needs to penetrate the autoclave load uniformly, so an autoclave must not be overcrowded, and the lids of bottles and containers must be left ajar.
- h. Before opening up the *Autoclave* at end of the cycle, make sure that the depresssurization is complete, the pressure gauge is reading "0" psi.
- i. Never apply any force to open an *Autoclave*.
- j. You must use distilled water to extend the life of sterilizer.
- k. It is suggested that you use a matched instrument hand clip to take out the equipment's to avoid scalding.
- l. The *Autoclave* should not operate in an enclosed area like cupboards.
- m. There are no serviceable parts inside the chamber; any authorized personnel should service the equipment.

### 3.0 INSTALLATION:

#### 3.1 Environmental conditions:

- ✓ Ambient temperature : 5 °C-40 °C
- ✓ Relative humidity: ≤ 85%

#### 3.2 Utility Requirements:

- a. **Electrical:** The autoclaves #7407PAD needs a 15 A wall socket.



*All these connections need proper earthing.*

- b. **Water:** Distilled or demineralised water for steam generation.

#### 3.3 Placement:

- a. Place the Autoclave on a level surface, isolated from any major heat and humidity sources.
- b. The room should be well ventilated. The Autoclave should be placed suitably far from walls or other partitions. This will prevent action of hot steam on these surfaces and also allow service person easy access to the Autoclave while servicing it.
- c. The Autoclave should be close to a drain to allow easy drainage of the Autoclave

#### 4.0 OPERATION:

##### 4.1 Procedure:

- a. Open the chamber by turning the lid anti clockwise.
- b. Remove the Dressing Drum but leave the Heater Cover X stand inside.
- c. Pour DISTILLED WATER direct into the Autoclave, up to the Heater Cover X stand.



*Please do not spill any chemical or any liquid inside the chamber .*

- d. Load the material into the Dressing Drum, and put it in the Autoclave, close the lid by turning the lid clockwise.
- e. Now switch ON the autoclave using rocker switch present on the controller box.
- f. When switch on the autoclave the main display shows actual temperature & set point.
- g. To start the cycle press UP key then lower display will show 'strt' message, now press the 'START/STOP' Key for 3 sec. & Cycle will be start.
- h. Keep manual valve open till temperature reaches to 99°C for efficient purging.
- i. After this, the temperature and pressure will gradually rise, which will be indicated by the controller & Pressure Gauge.
- j. As soon as the temperature reaches 121°C~122°C the heater will be cut off and the TIMER will start its countdown. (the time and temperature are preset at 121°C and 20 min.). During the countdown the temperature and hence the pressure will be maintained by the controller by ON / OFF control action of the heater. After the elapse of the set time, the Heater will be cut off and same time Buzzer will be resonate for 30 seconds, after that 'EOC' message will be displayed .
- k. Open the manual Exhaust Valve (on lid) for releasing the pressure.
- l. Open the lid ONLY AFTER THE PRESSURE GAUGE SHOWS '0'. **Do not attempt to open lid even 1 or 2 psi. Always wait up till the Gauge reads zero before opening the lid.**
- m. To restart the cycle , press Up key then lower display will show 'strt' message, Now press START/STOP key to start the cycle.
- n. Be sure to top up the water level with distilled water before starting a new cycle.

**Note: During heating to boiling point of water & after sterilization there are chances of falling water droplets from the lid which is acceptable.**

#### 4.2 Front panel of the controller:



1. Heater LED: Indicates the status of Heater whether ON / OFF.
2. Alarm LED: Indication of an Alarm condition viz. Floating overshoot, End of cycle.
3. Tune : Indicates the auto tuning.
4. START / STOP : Button used for the Start and Stop the cycle.
5. SET key: Used for setting of the parameters.
6. SHIFT Key : Shift key used for shifting cursor or blinker right to left to set the value.
7. UP key: Up key used for increasing the value of the parameter. Also as an alarm acknowledgment.
8. DOWN key: Down key used for decreasing the value of parameter, to scroll through set point and set soak time value.
9. Actual value: The upper screen will display the present value of the parameter.
10. Set value: The lower screen displays either the status of the timer and control set point.

#### 4.3 Controller settings:

Connect the equipment to the supply and switch on the supply switch.

- i. Turn on the rocker switch provided on the control panel.
- ii. Press UP key, below screen will appear.



- iii. User can't set the temperature set point and soak time (121 °C/20 min )
- iv. Press the 'START/STOP' key for 3 sec. to start the cycle. The below screen will appear, in which 'HEATER LED' will glow & temperature will rise up to set point.



- v. After elapse of set time cycle stops, a buzzer will be resonate and 'ALARM LED' will glow. The below screen will appear.



- vi. To restart press UP key , 'strt' will be displayed on display . Now press 'START/STOP' key to start the cycle
- vii. To stop the cycle during operation, press ' START/STOP', EOC will be displayed on the controller.

### **5.0 CLEANING:**



*Please clean the autoclave once in a week.*

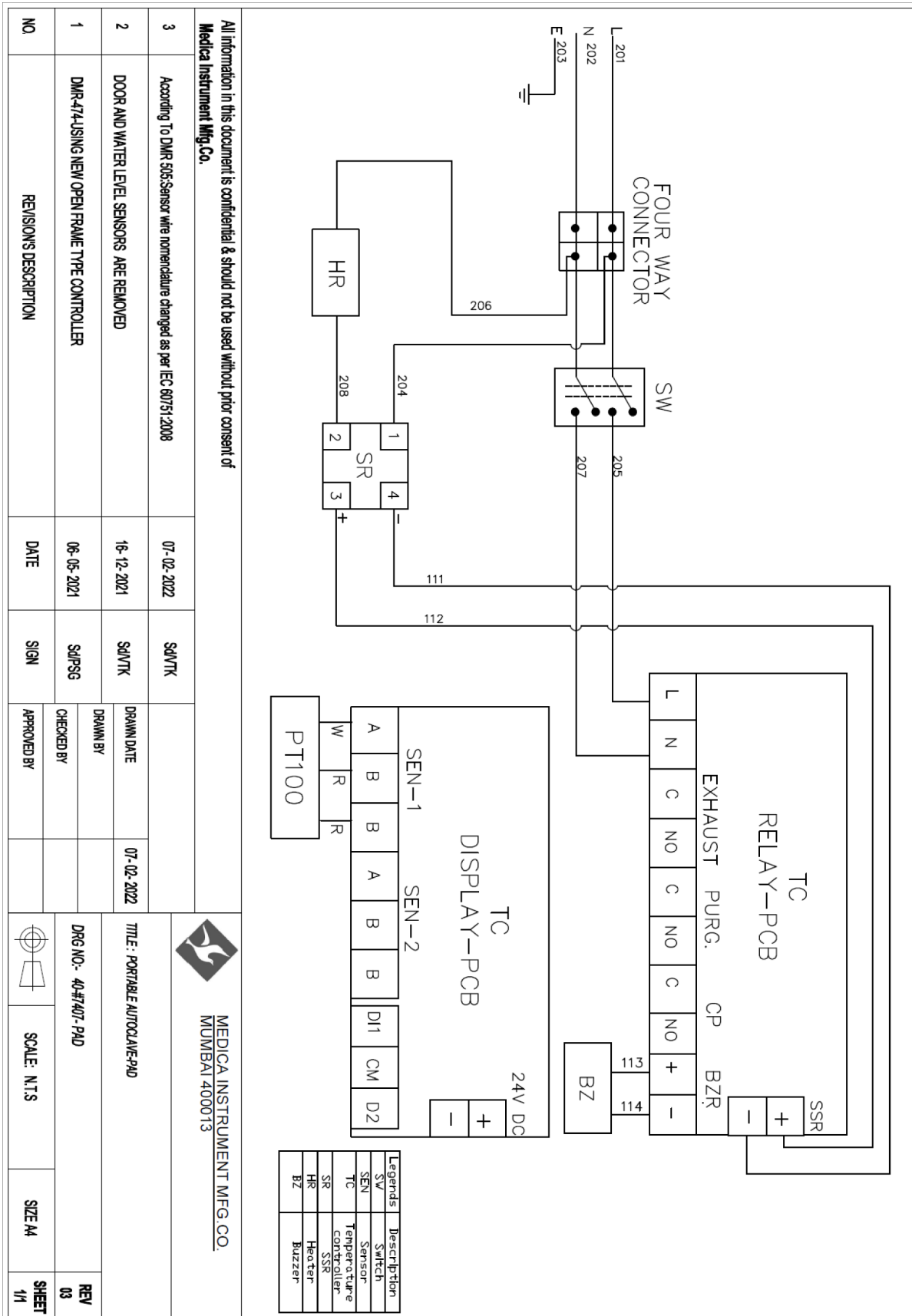
- a. Unplug the Autoclave.
- b. To clean the chamber, remove all the water from the Autoclave.
- c. After the chamber is emptied, clean it with a moist damp cloth. A mild soap solution may be used if necessary. Ensure that you do not spill water over the control panel.

### **6.0 TECHNICAL SPECIFICATIONS:**

#### **6.1 General Specifications:**


	<b>7407PAD</b>
Supply	230 VAC 50 Hz, single phase.
Heater	1800 W
Timer	Preset at approximately 20 minutes

6.2 Wiring diagram for controller:



All information in this document is confidential & should not be used without prior consent of Medica Instrument Mfg. Co.

3	According To DMR 905 Sensor wire nomenclature changed as per IEC 60751:2008	07-02-2022	SDVTK						
2	DOOR AND WATER LEVEL SENSORS ARE REMOVED	16-12-2021	SDVTK						
1	DMR-474 USING NEW OPEN FRAME TYPE CONTROLLER	06-05-2021	SDPSSG						
NO.	REVISIONS DESCRIPTION	DATE	SIGN	APPROVED BY	CHECKED BY	DRAWN BY	DATE		


**MEDICA INSTRUMENT MFG. CO.**  
 MUMBAI 400013

**TITLE: PORTABLE AUTOCLAVE-PAD**  
**DRG NO.: 40-7407-PAD**  
 SCALE: N.T.S  
 SIZE: A4  
 SHEET 1/1

REV 03  
 REV 03

## **WARRANTY**

### **Scope:**

- a. This warranty extends only to the original buyer & may not be extended to a third party without a written consent of manufacturer.
- b. All products of EQUITRON MEDICA PRIVATE LIMITED are warranted against manufacturing defects for a period of one year from the date of Invoice.
- c. An authorized EQUITRON MEDICA PRIVATE LIMITED dealer will repair the device free of charge, provide required parts (except for the exceptions noted below) and perform labor free of charge during the warranty period.

### **Restriction:**

- a. This warranty does not apply if an attempt has been made to repair, rectify alter or dismantle the product by an unauthorised person.
- b. This warranty also does not cover damages resulting from accident, mishandling, negligence and breakage in transit.
- c. This warranty covers only the main instrument & manufacturer shall not be liable for damages to any accessory connected to it.
- d. Under no circumstances would we be liable for any consequential loss, damage or suffering due to any malfunctioning of our product, bonafide or otherwise.

### **Exclusion:**

- a. All Consumables.
- b. Items like Heaters, Pressure / Compound / Vacuum Gauges, Pilot Lamps, Lamps - all kinds and Switches are excluded form the scope of warranty.

**Sr No of the product:**

## Контакты сервисных центров

### Сервисный центр Диаэм в Москве:

Адрес: 129345, г. Москва, ул. Магаданская, д.7, корп.3

Тел.: 8 (800) 234-05-08, +7 (495) 745-05-08

[service@dia-m.ru](mailto:service@dia-m.ru), [www.dia-m.ru](http://www.dia-m.ru)

### Сервисный центр Диаэм в Новосибирске:

Адрес: 630090, Новосибирск, Академгородок, пр. Ак. Лаврентьева, 6/1, офис 100А

Тел.: 8 (800) 234-05-08, +7 (495) 745-05-08

[service@dia-m.ru](mailto:service@dia-m.ru), [www.dia-m.ru](http://www.dia-m.ru)

### Сервисный центр Диаэм в Казани:

Адрес: 420111, Казань, ул. Профсоюзная, д.40-42, пом. № 8

Тел.: 8 (800) 234-05-08, +7 (495) 745-05-08

[service@dia-m.ru](mailto:service@dia-m.ru), [www.dia-m.ru](http://www.dia-m.ru)

### Сервисный центр Диаэм в Санкт-Петербурге:

Адрес: 197022, Санкт-Петербург, ул. Профессора Попова, д. 23, лит. Д, офис 614 (БЦ «Гайот»)

Тел.: 8 (800) 234-05-08, +7 (495) 745-05-08

[service@dia-m.ru](mailto:service@dia-m.ru), [www.dia-m.ru](http://www.dia-m.ru)

